



Disclaimer

Customer acknowledges that all data provided or available through MSKYNET, Inc. a Delaware corporation (“MSKYNET”) is owned either by MSKYNET or by third-party data providers (the “Owners”), and that Customer shall not acquire any ownership or interest whatsoever in such data. The data is provided “as-is” and MSKYNET provides no warranties of any type to Customer. MSKYNET and its data providers are not liable for any consequential damages or financial loss caused by any person's reliance on the data.

Abstract

This document provides an aggregate report for a subset of the QR Code (2D barcode) scans of MSKYNET's SPARQCode technology. The report summarizes the scan data by Mobile Phone Type, Country, Day of Week and Time of Day.

Company

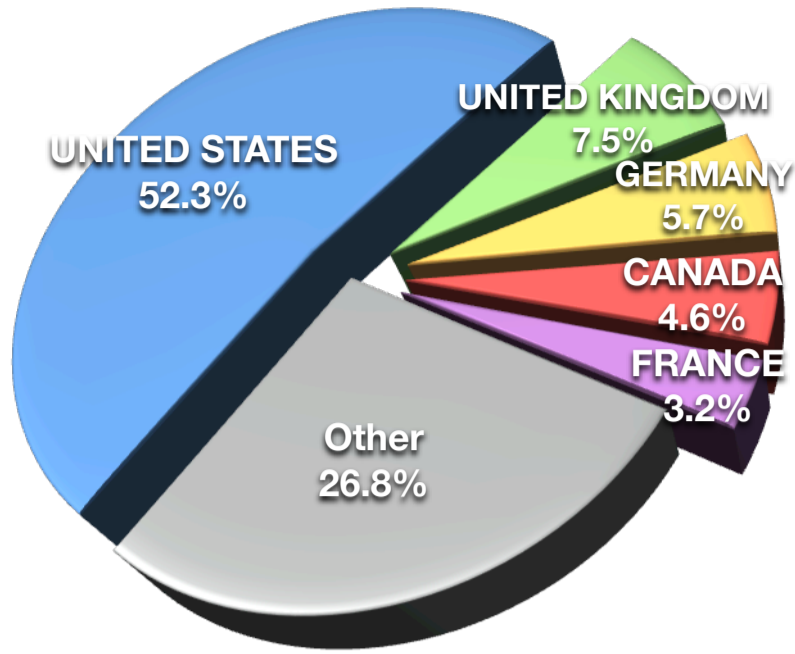
MSKYNET, Inc.
pingtre@mskynet.com

Visit the MSKYNET website at www.mskynet.com

Copyright © 2010 MSKYNET, Inc.

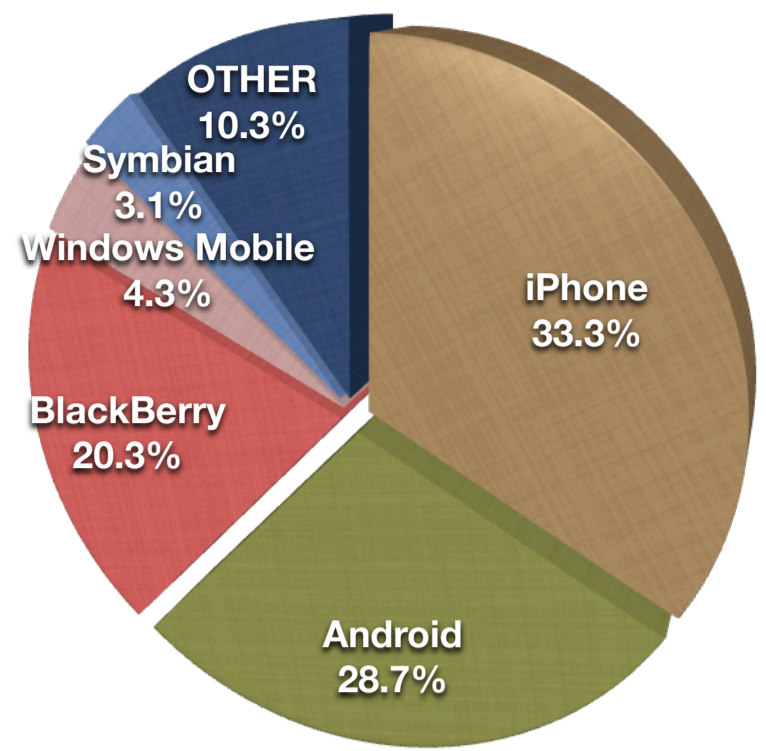
US QR CODE STATISTICS (Q1 2010)

MSKYNET QR Code Scans Traffic (Top 5 Countries)



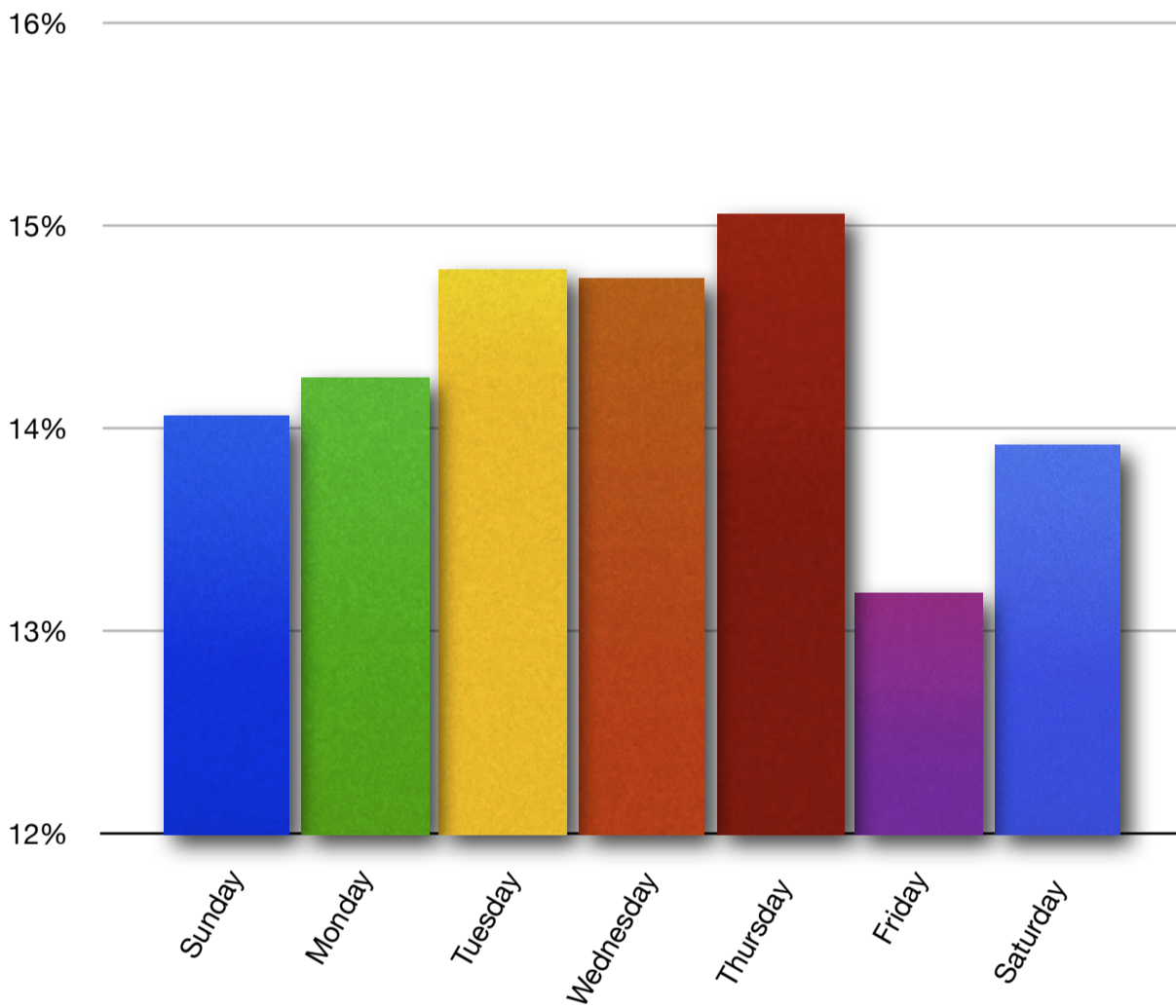
Country	Scans
UNITED STATES	52.3%
UNITED KINGDOM	7.5%
GERMANY	5.7%
CANADA	4.6%
FRANCE	3.2%
Other	26.8%

QR Code Scans by Phone Type



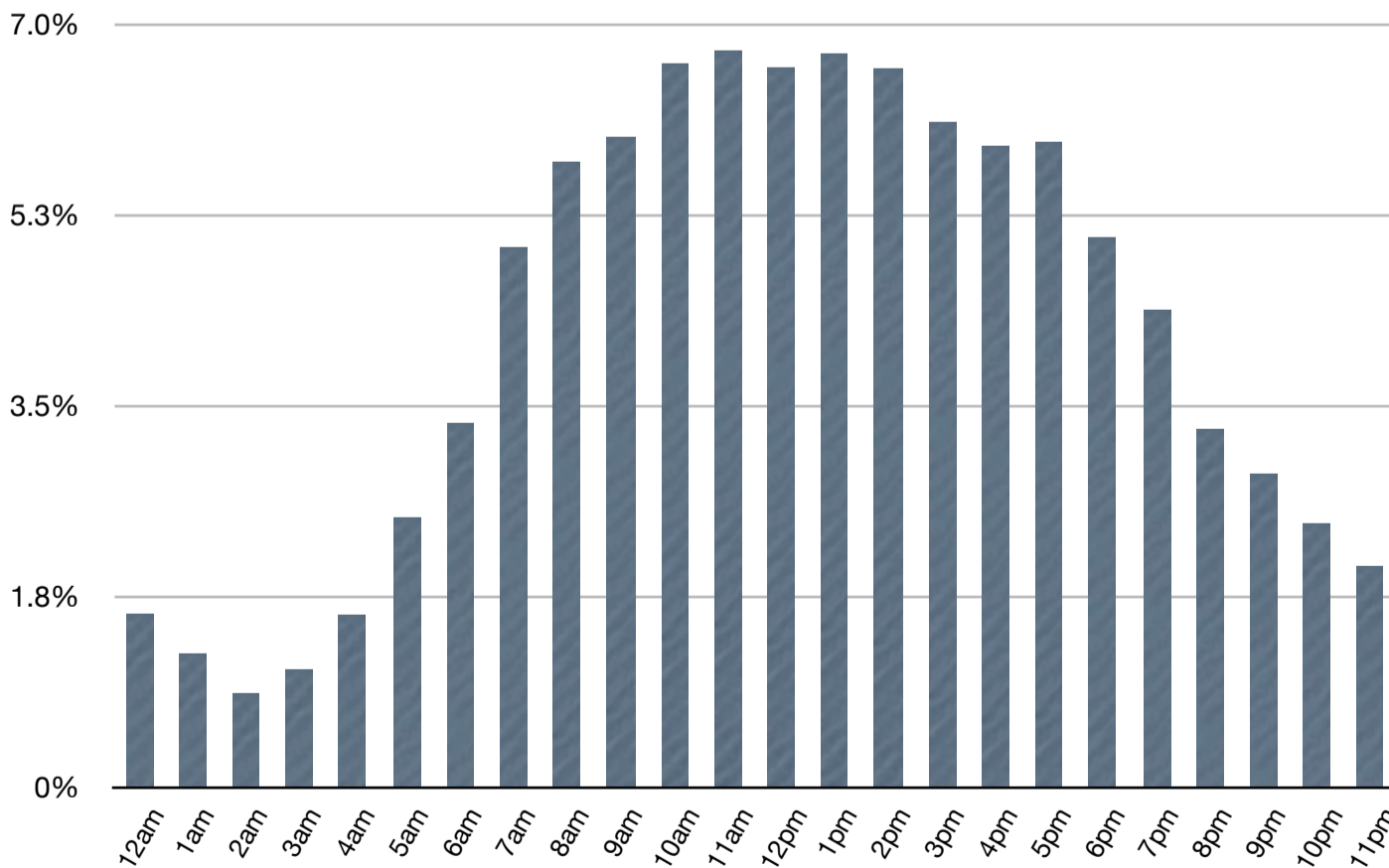
Phone Type	Scans
iPhone	33.3%
Android	28.7%
BlackBerry	20.3%
Windows Mobile	4.3%
Symbian	3.1%
OTHER	10.3%

QR Code Scans by Day of the Week



Day of Week	Scans
Sunday	14.1%
Monday	14.3%
Tuesday	14.8%
Wednesday	13.9%
Thursday	15.1%
Friday	12.2%
Saturday	13.2%

QR Code Scans by Hour (PST)



Time of Day (PST)	Scans
12:00 AM	1.6%
1:00 AM	1.2%
2:00 AM	0.9%
3:00 AM	1.1%
4:00 AM	1.6%
5:00 AM	2.5%
6:00 AM	3.3%
7:00 AM	5.0%
8:00 AM	5.7%
9:00 AM	6.0%
10:00 AM	6.6%
11:00 AM	6.8%
12:00 PM	6.6%
1:00 PM	6.7%
2:00 PM	6.6%
3:00 PM	6.1%
4:00 PM	5.9%
5:00 PM	5.9%
6:00 PM	5.0%
7:00 PM	4.4%
8:00 PM	3.3%
9:00 PM	2.9%
10:00 PM	2.4%
11:00 PM	2.0%