

# MSKYNET

## **Disclaimer**

Customer acknowledges that all data provided or available through MSKYNET, Inc. a Delaware corporation (“MSKYNET”) is owned either by MSKYNET or by third-party data providers (the “Owners”), and that Customer shall not acquire any ownership or interest whatsoever in such data. The data is provided “as-is” and MSKYNET provides no warranties of any type to Customer. MSKYNET and its data providers are not liable for any consequential damages or financial loss caused by any person's reliance on the data.

## **Abstract**

This document provides an aggregate report for a subset of the QR Code (2D barcode) scans of MSKYNET's SPARQCode technology. The report summarizes the scan data by Mobile Phone Type, Country, State, Day of Week and Time of Day.

## **Company**

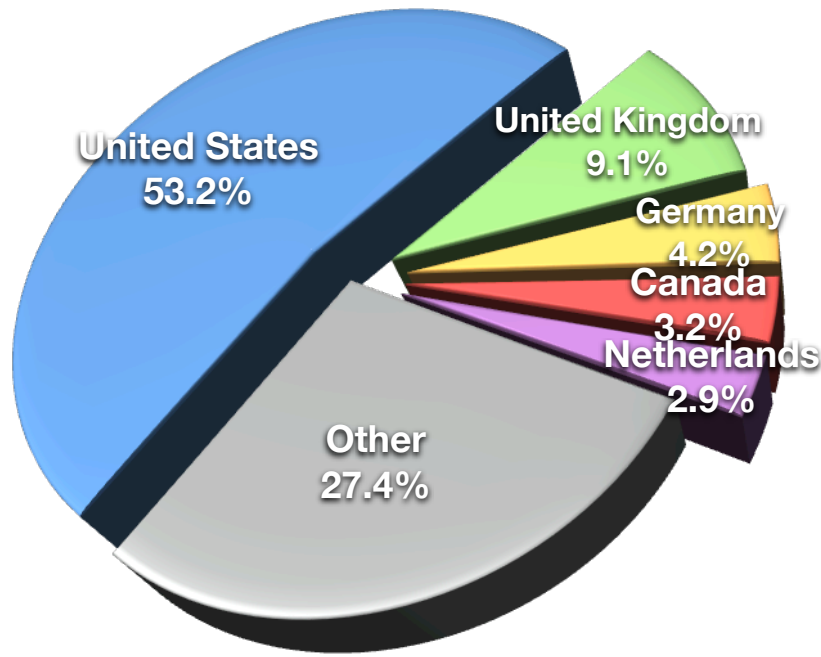
MSKYNET, Inc.  
pingtre@mskynet.com

Visit the MSKYNET website at [www.mskynet.com](http://www.mskynet.com)

Copyright © 2010 MSKYNET, Inc.

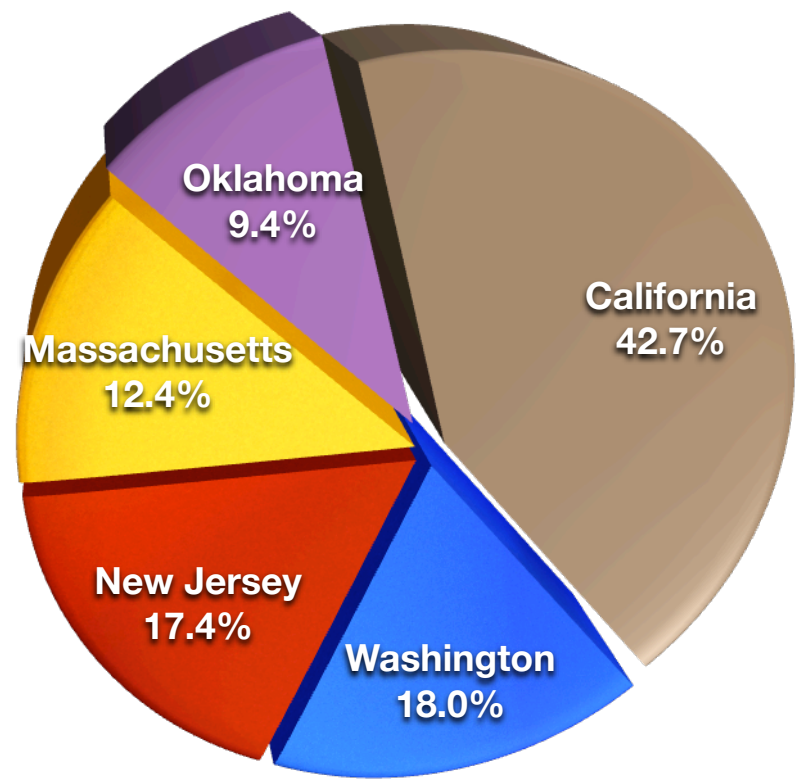
# US QR CODE STATISTICS (DECEMBER 2009)

**MSKYNET QR Code Scans Traffic (Top 5 Countries)**



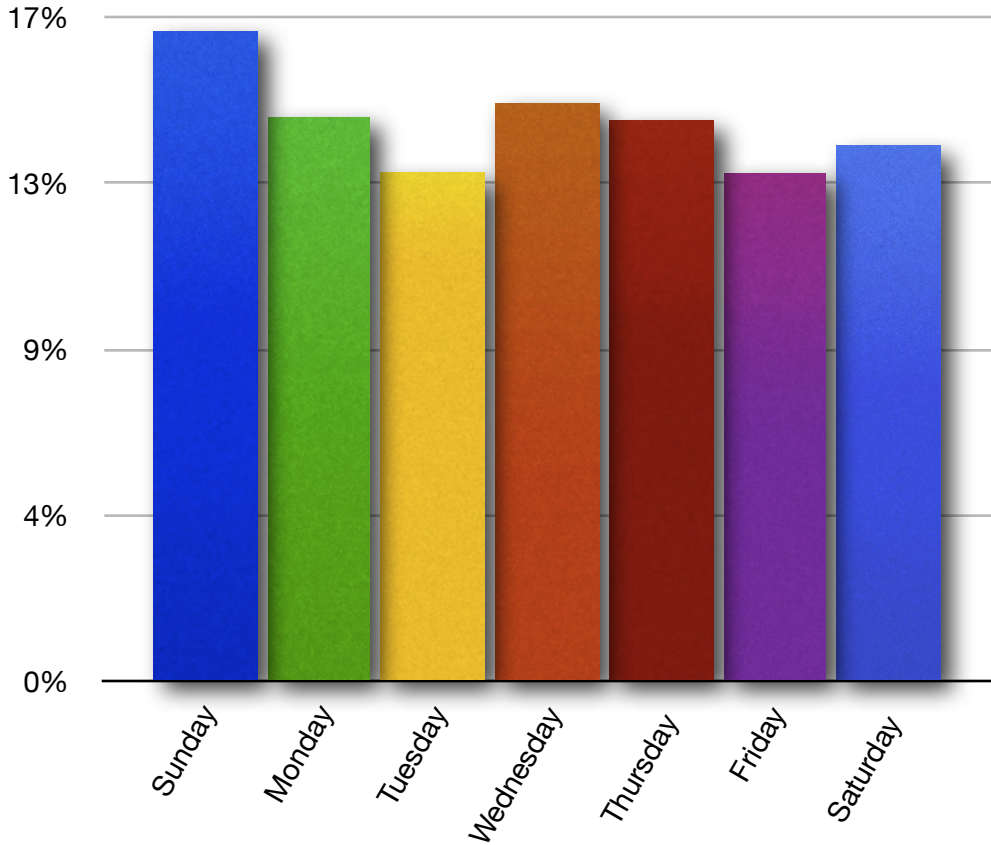
Country	Scans
United States	53.24%
United Kingdom	9.05%
Germany	4.19%
Canada	3.21%
Netherlands	2.90%
Other	27.41%

**QR Code Scans by Top US States**



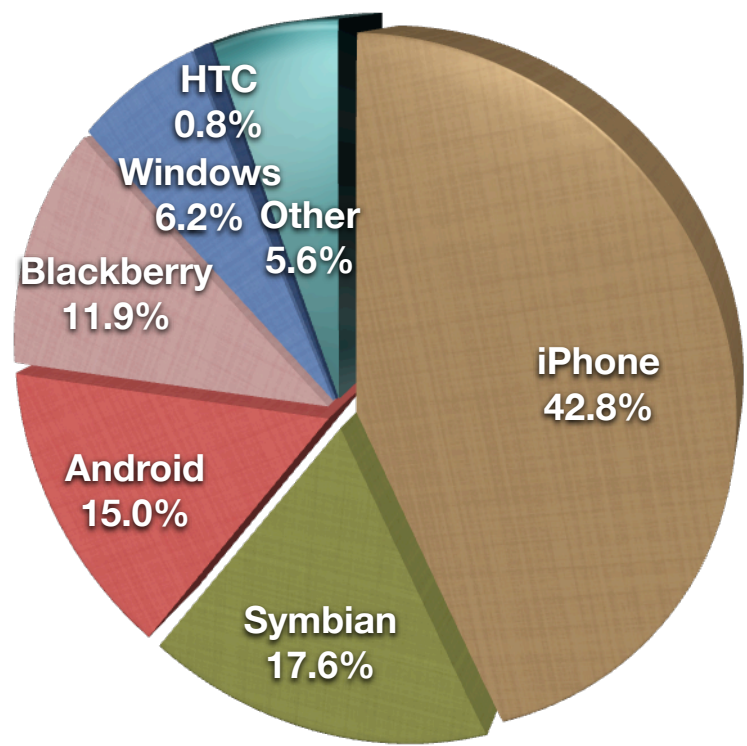
US State	Scans
California	42.68%
Washington	18.05%
New Jersey	17.41%
Massachusetts	12.43%
Oklahoma	9.43%

**QR Code Scans by Day of the Week**



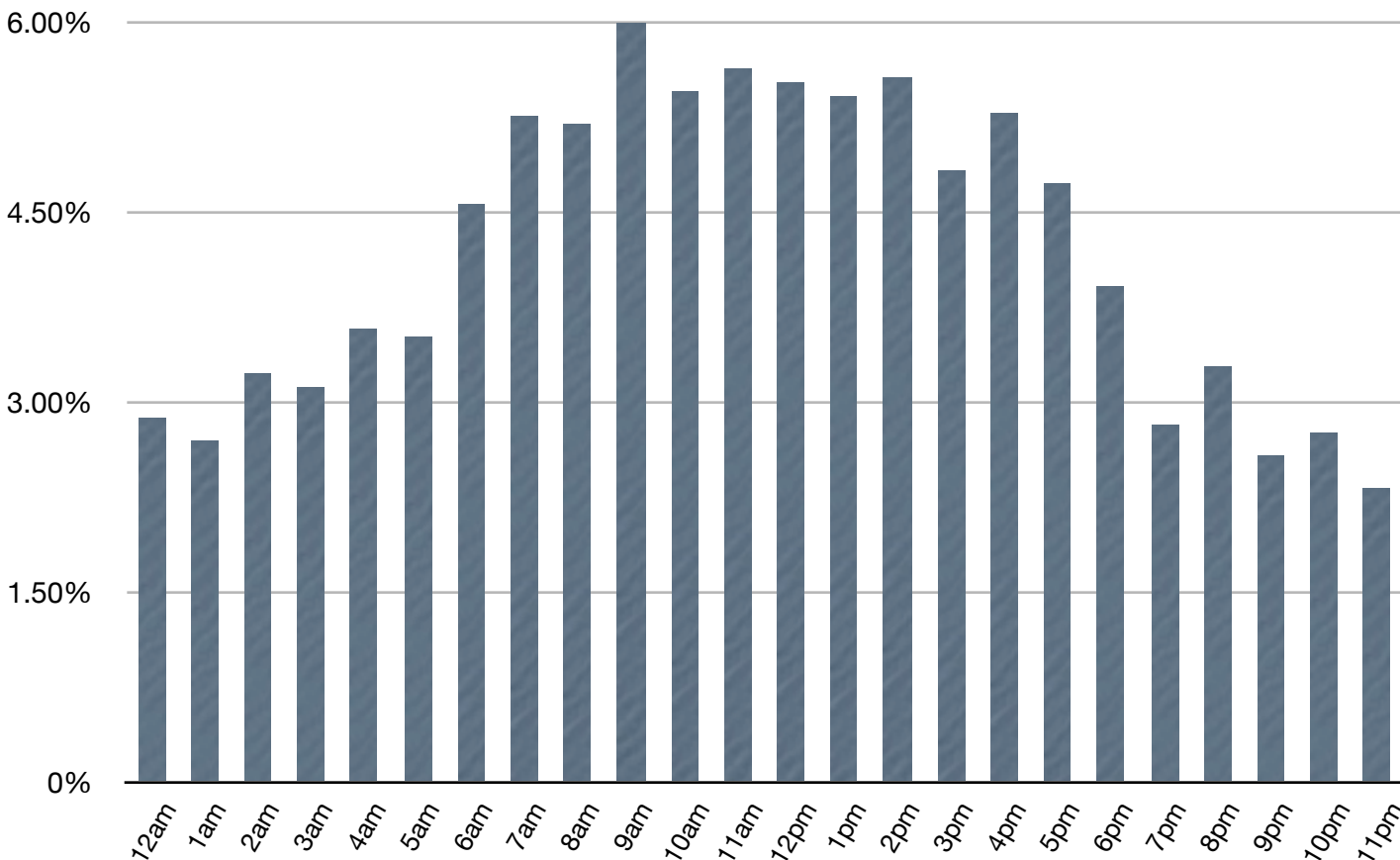
Day of Week	Scans
Sunday	16.65%
Monday	14.44%
Tuesday	13.03%
Wednesday	14.80%
Thursday	14.35%
Friday	13.01%
Saturday	13.71%

**QR Code Scans by Phone Type**



Phone Type	Scans
iPhone	42.81%
Symbian	17.57%
Android	15.04%
Blackberry	11.93%
Windows	6.21%
HTC	0.81%
Other	5.63%

**QR Code Scans by Hour (PST)**



Time of Day (PST)	Scans
12:00 AM	2.87%
1:00 AM	2.69%
2:00 AM	3.23%
3:00 AM	3.11%
4:00 AM	3.57%
5:00 AM	3.51%
6:00 AM	4.56%
7:00 AM	5.25%
8:00 AM	5.19%
9:00 AM	6.00%
10:00 AM	5.45%
11:00 AM	5.63%
12:00 PM	5.52%
1:00 PM	5.41%
2:00 PM	5.56%
3:00 PM	4.82%
4:00 PM	5.27%
5:00 PM	4.72%
6:00 PM	3.91%
7:00 PM	2.82%
8:00 PM	3.28%
9:00 PM	2.57%
10:00 PM	2.75%
11:00 PM	2.31%

